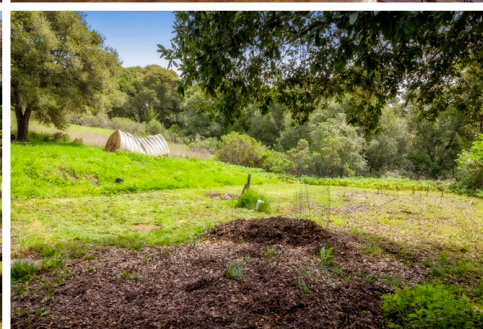
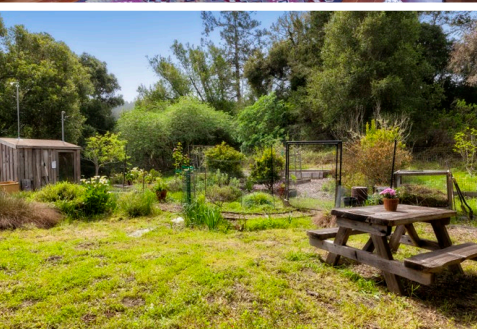
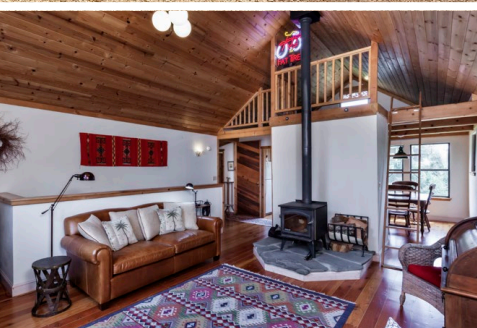


7145 LA HONDA ROAD

LA HONDA





SUMMARY OF THE HOME

- Stunning knoll-top setting on approximately 10 acres adjacent to open space
- Extensively remodeled country home and newly painted inside and out
- Remodel completed in early 1990s with permits
- Private bridge and driveway
- 1 bedroom and 1 bath plus lower-level bonus room (with permit) and private entrance
- Multi-level barn, with tremendous flexible-use space, bonus areas, and foundation repairs completed in 2018
- Beautiful hardwood floors and expansive windows throughout
- Large living room with wood stove, ladder access to the loft, and adjoining dining area
- Remodeled kitchen with granite and butcher block counters and vintage Wedgewood gas range
- Large bedroom with deck access, bathroom with shower, plus laundry area
- Dual-pane Milgard windows, Andersen glass front door, forced-air central heating
- 5,000-gallon water storage, 10gpm well, and backup generator
- Many level areas for picnics and entertaining
- Fenced garden with raised vegetable beds
- Riparian, redwood, oak, and grassland habitats
- Adjacent to La Honda Creek Open Space's Apple Orchard parcel, which is not currently open to the public
- Views of San Gregorio Valley
- Second building site previously permitted in early 1990s (buyer to investigate current possibilities with San Mateo County)
- Plenty of room for pets and livestock and potential for horses
- House, barn, and utility shed were fumigated February 2019
- Disclosures available upon request
- Buyer 1-year Home Protection Plan is included with this sale

Offered at \$1,599,000

www.7145LaHondaRd.com

CLOSE TO . . .

La Honda County Market.....	1.8 miles.....	3 min
La Honda Elementary School	2.2 miles.....	4 min
San Gregorio Beach.....	7 miles.....	10 min
Half Moon Bay.....	17 miles.....	21 min
Pescadero	14 miles.....	25 min
Town of Woodside	13 miles.....	26 min
Highway 280	14 miles.....	28 min
Apple	30 miles.....	43 min
Facebook.....	23 miles.....	44 min
Google.....	26 miles.....	46 min
San Francisco Int'l Airport	38 miles.....	47 min

JANIS FRIEDENBERG GRUBE
Principal Broker
650.346.8690

janis@fgrehomes.com
www.FGREhomes.com
CalRE#01365341

FRIEDENBERG GRUBE REAL ESTATE